

It is a modern day building material extensively used to not just save costs but also show a sense of responsibility towards our environment. The fly ash has been extracted from thermal power plant than it is processed by modern Equipments at our plant. The process used to produce Ezee Ash significantly reduces the amount of unburned particles leading to a virtually carbon free material. Optimum reactivity is obtained by rejecting the less reactive crystalline Fly Ash particles and by increasing the specific surface of the final product.

The final product is a very fine, high grade fly ash. Our products has been used by many RMC plants for replacement of cement. It not only enhances the performance of concrete but also increase the structure Life. Ezee Ash is supplied in both bulk & bags packing of 40kg. Recons Group is having its own bulker fleet to handle the major Bulk fly ash movements.

Some of the benefits of EzeeAsh includes:

- Reduced water-cement ratio which produces less shrinkages and less cracks.
- Improved bonding of layers due to slow setting
- Better bond to steel and improved off-shutter finish
- Increased long term strength development
- Reduced cost
- Improved workability owing to the sphericity of flyash
- Reduced danger of deterioration of Sulfates and Chlorides and thus greater durability
- Finer and more refines ore structure leading to less permeable and more beneficial reinforced concrete
- Specially processed and hence allowing high replacement rates than normal flyash.

Savings

- Cement Cost for Ex. Rs 5/kg and Fly Ash Cost 2.3 Rs/Kg.
- As per IS standard 3812 Maximum Cement can be replaced as max upto 35%.
- Now suppose for 1m³ of concrete 350 kg cement is used.
- After replacement 30% cement with Ezee Ash.
- 245 kg cement @5 Rs/kg and 105 kg @2.3 Rs = 1225+240= 1465 Rs/m³
- If we make concrete than total cement used will be 350kg @5 = 1750 Rs/m³
- Total Net Savings of 1750- 1465 = 285 Rs/m³ or 15 % of total cement consumption of Project can be saved by proper usage of Ezee Ash.



Recons Group

Growth Is Passion.

Recons Group of Companies

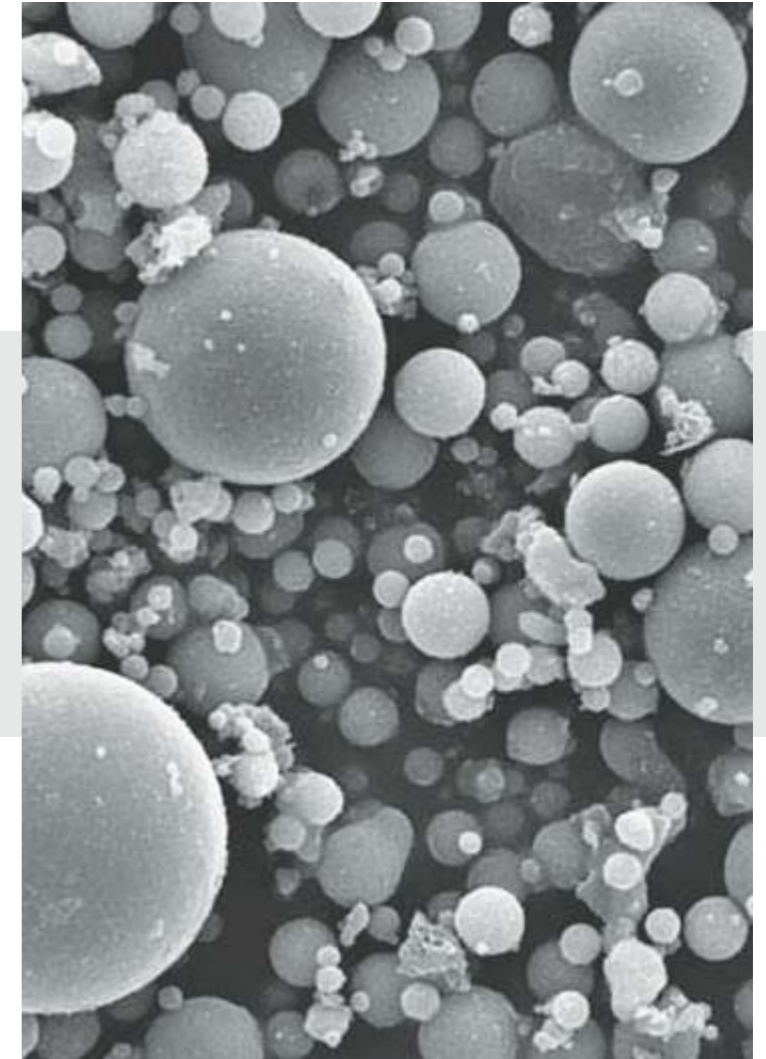
● CEMENT ● BUILDING PRODUCTS ● INVESTMENTS

Swagat Bldg., 2nd Floor, Shradhhananad Road, Nr. Navin Thakkar Hall, Vile Parle (E), Mumbai – 57.

Tel .: 022- 40677000 / 26173045 | Fax : 022- 40677005 | E: info@recongroup.com | W: www.reconsgroup.com



Greener Today. Brighter Tomorrow.



Ezee Ash

A product of Recons Group, EzeeAsh is a high quality processed fly ash from the house of the Recons Group. The Ezee Ash range is an artificial pozzolan, specially designed to achieve optimum performance on most cement and concrete applications confirming to IS3812 standards.